



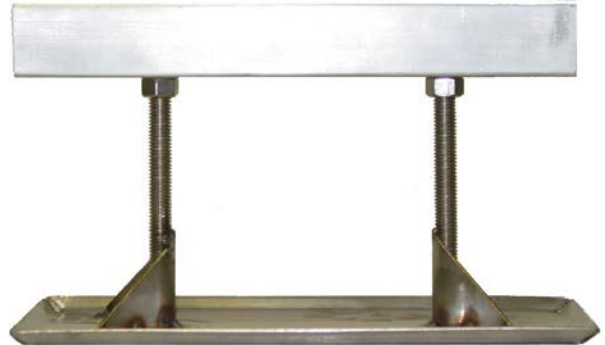
Engineering Submittal Form – MX-12SA6

CERTIFIED FOR:

Job Name:	Customer Name:
Location:	Customer P.O.:

Recommended Usage:

Use as a free standing; non-penetrating pipe support stand for all piping applications installed on single ply and built-up roofs within the recommended weight limit. This support is designed to accommodate single or multiple runs of conduit. **(Specific consideration should be given to the size of conduit and the recommended weight limits.)** Additionally, this support may be utilized for securing refrigeration line sets or natural gas piping when thermal expansion is not a concern. The adjustable rod assembly allows piping to be installed level on tapered roofs. The addition of the optional neoprene pad adhered to the base provides additional protection for the roof during installation. All supports are available with optional MWP Series- 1/2" Walk Pad and adhesive for "in the field" application.



Standard Composition:

Support Base is 18 gauge - 304 stainless steel with all stainless steel hardware and features rolled edges to prevent incidental damage to roof surface. All with stainless steel hardware; The aluminum strut provides the means for securing several pipes.

MAPA Products Supports are designed and manufactured in accordance with MSS SP-58-2002 and MSS SP-69-2002.

Refer to MAPA Products "Recommended Installation Guidelines" for standard installation and spacing recommendations.

Composition:

Strut Assembly	12" – 1 5/8" Aluminum Shallow Strut
Threaded Rod Assembly	1/2" X 6" Grade 304 SS ATR
Maximum Adjustability	4" – 6"
Base Dimensions	6" X 12"
Footprint	72 sq in.
Weight Limit	195 lbs

** When used for conduit; specific consideration should be given to the size and number of conduits and the supports recommended weight limit so that maximum support load is not exceeded.*

Optional Accessories:

- MWP1016- 1/2" thick rubber walk pad
- Snap-N-Strut Clamps (Refer to SNS selection chart for sizing)

Warranty:

Limited Lifetime Warranty--When installed in accordance with MAPA installation and maintenance specifications and using only MAPA materials, MAPA warrants its support bases and assemblies to be free from defect and will repair or replace product at MAPA's discretion. Rusting that is not detrimental to the integrity of the support is not warranted. Damage caused by incorrect installation, improper usage or improper maintenance is not warranted. Recovery rights shall be limited to the total sum of the amounts paid for the product by the purchaser.

Limits of Liability:

ISIMET/MAPA liability shall be limited to costs of repair or replacement parts. Supports are not intended for usage other than those expressly described in product catalog. ISIMET/MAPA does not perform engineering design and shall not be liable for damage or injury caused by the improper use or installation of the product.

Certification Data						
Support Pad Options						
QTY	NP	WP	Pipe Size	Service	SNS Selection	Notes & Options
	<input type="checkbox"/>	<input type="checkbox"/>				
	<input type="checkbox"/>	<input type="checkbox"/>				
	<input type="checkbox"/>	<input type="checkbox"/>				
	<input type="checkbox"/>	<input type="checkbox"/>				
	<input type="checkbox"/>	<input type="checkbox"/>				

DRAWN	CHECKED	DATE	DWG.NO.
--------------	----------------	-------------	----------------

Effective Date: January 2020

Doc. #: M-13818

MAPA Products, LLC.
 103 C J Wise, Naples, TX 75568
 MAPA: 903-781-6996
 customerservice@mapaproducts.com